

sync5

to synchronize; to harmonize. Lighting that becomes
one with the space and enriches every detail.



sync

to synchronize;
to harmonize.
Lighting that becomes
one with the space and
enriches every detail.

PRODUCT DESIGN CONCEPT

GLARE-LESS

Lighting fixtures designed to minimize their presence on the ceiling by reducing their size, and to enhance the illumination of objects and spaces. These fixtures reduce unpleasant glare and create a relaxing home environment.

BEAUTIFUL EFFECT

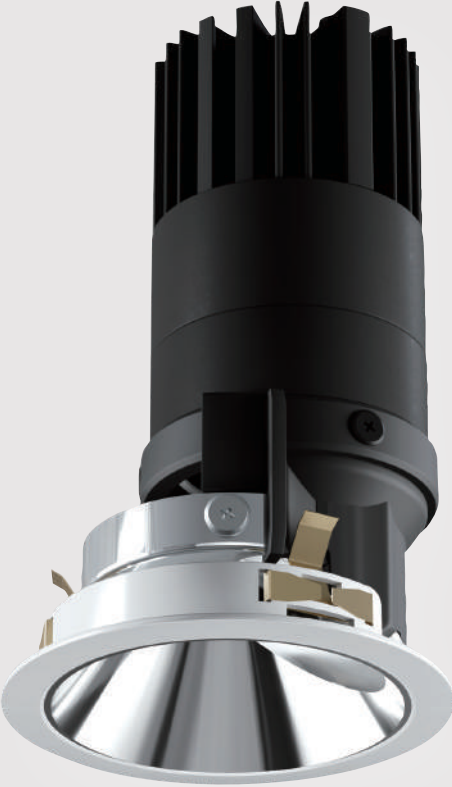
These lighting fixtures are designed with a focus on creating beautiful shapes of light. From Super-Narrow beams that sharply highlight objects such as artwork to wall washers that softly illuminate walls, the extensive lineup of lighting distributions complements interior design and creates a rich, varied ambiance rather than a monotonous one.

SUSTAINABLE DESIGN

Our wish is for lighting fixtures to be loved eternally. We designed and engineered every detail of our fixture to keep the deep impression you felt the first time you saw it - so that the sense of beauty and emotion it brought can stay with you over time.

FEATURED
PRODUCTS





MINI50

GLARE-LESS

Fixture diameter: 60

The MINI50 GLARE-LESS series is immensely popular in hotel and residential projects. With ten distribution options and three power ranges, they are suitable for any living space. The standard cone has a mirrored finish, which helps diffuse light off the surface and reduces fixture presence to an absolute minimum, creating a sophisticated ceiling appearance. We also offer other finishes, such as the black cone for a more dramatic aesthetic, and the white cone for a softer, more natural design. Find the perfect fit for your interior space.

- 300 / 500 / 700TYPE 6.3 / 10.2 / 14.2W
- 3000K CRI83

3000K CRI93

2700K CRI93
- Glare Cut

35°
- Fixed:

Narrow 18°

Middle 23°

Wide 31°

Super Wide 45°
- Adjustable:

Super Narrow 11°

Narrow 15°

Middle 22°

Wide 26°

Super Wide 36°



Fixed



Adjustable



Wallwasher

The MINI50 GLARE-LESS series is ideal for living rooms, where various types of lighting are often combined. It ensures ample illumination for gatherings while making the fixtures seemingly disappear from the ceiling. As a result, it enhances the effects of indirect and shelf lighting, and makes features like artworks stand out.



The MINI35 GLARE-LESS series is ideal for illuminating items like vases, sculptures, and paintings above console tables. It helps objects elegantly stand out without drawing attention to the lighting fixtures themselves.



MINI35

GLARE-LESS

Fixture diameter: 43

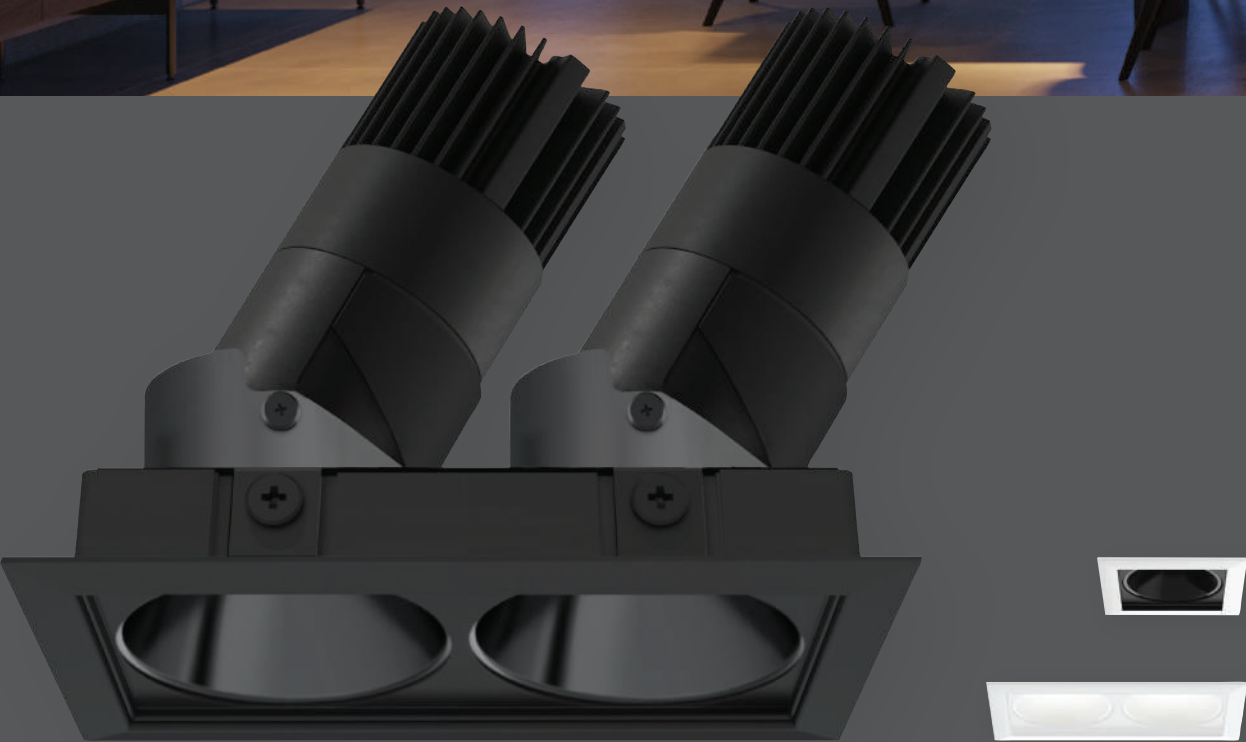
Following in the footsteps of the MINI50 series, the MINI35 series offers GLARE-LESS experience in a compact package. Despite its size, the series boasts a 40° cut off angle and provides four beautiful beam angle variations. Serving as both Fixed and Adjustable, all fixtures include a 25° tilting angle and 355° rotation capability. Additionally, it incorporates thoughtful details such as the option to add a honeycomb louver.

- 250TYPE 5.6W
- 3000K CRI93 2700K CRI93 2400K CRI93
- Glare Cut 40°
- Narrow 16° Middle 22° Wide 29° Super Wide 54°



Fixed / Adjustable

The Dual Head fixture is perfect for a long dining table. Adjust the lights to match the length of the table, ensuring even coverage across the entire tabletop. With a Wide beam, the light will illuminate not only the food on the table but also the faces of the seated guests.



Fixture dimensions : 65x122

MINI50 SQUARE

The MINI50 series offers a square frame variation, available in Single Head or Dual Head configurations with various finishing options. Both fixed and adjustable models are available, allowing you to mix specifications to suit your needs. Pairing two 14W units in a Dual Head configuration provides ample brightness for high-ceiling spaces.

300 / 500 / 700TYPE 6.3 / 10.2 / 14.2W
● 3000K CRI83 ● 3000K CRI93 ● 2700K CRI93 | Glare Cut 35°

Fixed: ^ Narrow 18° ^ Middle 23° ^ Wide 31° ^ Super Wide 45°
Adjustable: \ Super Narrow 11° \ Narrow 15° \ Middle 22° \ Wide 26° \ Super Wide 36°



MINI35

SQUARE

Fixture dimensions : 47x117

The MINI35 SQUARE is an aesthetic variation of the MINI35 GLARE-LESS series. Its rugged and technical square design adds a distinctive accent to interior spaces. You can choose and combine all beam angle variations from the MINI35 GLARE-LESS series. This series also retains the adjustable design, allowing for various configurations of base and accent lighting all in a single fixture.

250TYPE 5.6W

3000K CRI93

2700K CRI93

2400K CRI93

Glare Cut

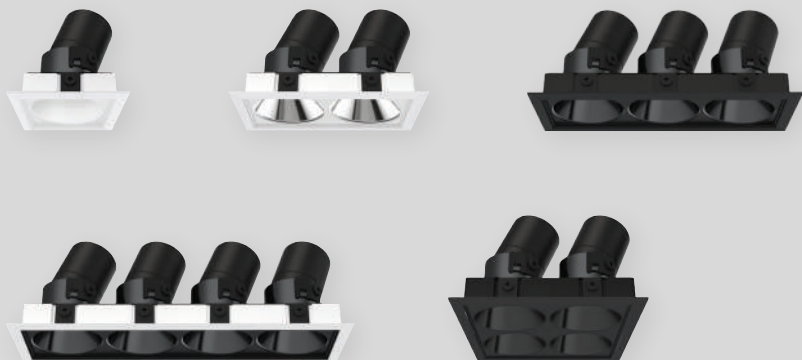
40°

Narrow 16°

Middle 22°

Wide 29°

Super Wide 54°



Black slits in the ceiling accent the ordinary beige-ish ceiling. The tabletop is evenly illuminated with a Wide beam distribution with precise focusing. The floor is softly illuminated with a Super-Wide distribution.



For a more private space like a bedroom, we recommend the pinhole downlights often seen in luxury hotels. The light emitted from the minimal aperture delivers a sense of warmth and relaxation. The Super-Narrow beam from the pinhole focuses only your immediate surroundings, making it perfect as a reading light.

MINI50

PINHOLE

The flagship MINI50 family is now offered in a pinhole variant. It features four types of light distributions, ranging from a sharp, Super-Narrow beam to a room filling Super-Wide beam, all emitted through a small $\Phi 25$ aperture hole. The hole has a 10mm raised edge that softly captures light, giving the fixture an elegant appearance. The adjustable, which can tilt 30°, has a 50° cut-off angle and allows for glare-free use even on high ceilings.

300 / 500 / 700TYPE 6.3 / 10.2 / 14.2W

3000K CRI83	3000K CRI93	2700K CRI93
-------------	-------------	-------------

Glare Cut 50° *Fixed only 35°

Super Narrow 9° Middle 21° Wide 24° Super Wide 37° *Fixed only



Fixed



Adjustable



MINI35

PINHOLE

Fixture diameter : 43

The MINI35 PINHOLE offers a delicate balance of minimalism and performance, ideal for entrances, hallways, and bedrooms in luxury residences and hotels. Its ultra-compact aperture, just 20mm in diameter, emits a focused beam of light that subtly highlights specific areas without drawing attention to the fixture itself. With a 40° glare cut-off and three beam angle options, it delivers warm, comfortable illumination while maintaining visual calmness.

250TYPE 5.6W

3000K CRI93 2700K CRI93 2400K CRI93

Glare Cut 40°

Narrow 16° Middle 22° Wide 29°



White



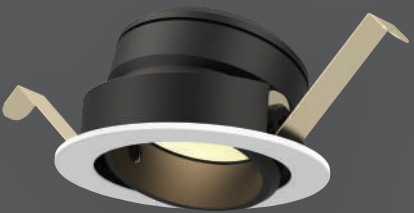
Black



Soft, precise lighting gently caresses the wood-textured surfaces, creating a serene and refined entrance. The MINI35 PINHOLE highlights the floral arrangement with elegance, while a delicate beam enhances the depth and tranquility of the space. Shadows cast on the door subtly add a sense of luxury and architectural drama.



The precisely controlled light from the reflector is perfect for creating subtle accents for items displayed on places like wall shelves, niches, and minibars. In hotel guestrooms, it can even be used as a main light fixture.



MINI35 SHALLOW

The MINI35 Shallow is another variation within the MINI35 family. We offer a wide selection of light distribution lineup, as well as the 20° tilting angle, while making the fixture even smaller. Available with two power ranges and honeycomb louver option for glare reduction, the MINI35 Shallow lives up to the reputation of other technical products from Endo.

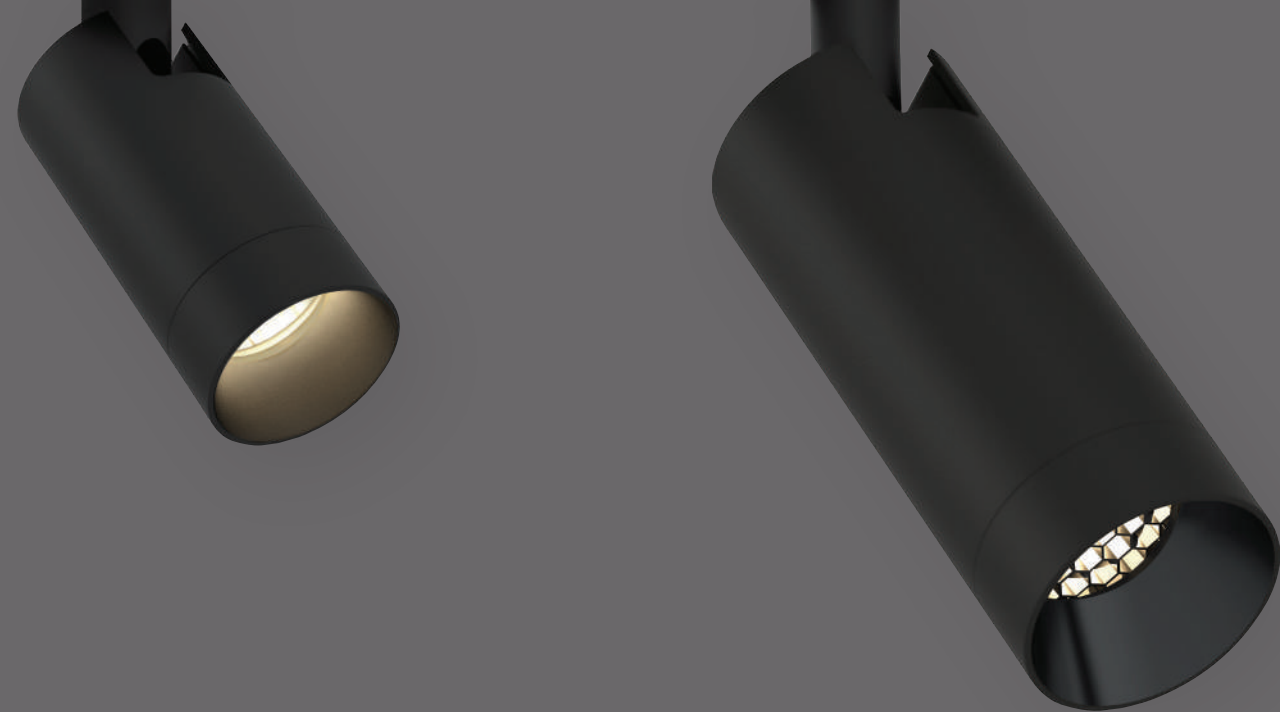
- 150 / 250TYPE 3.1 / 5.6W
- 3000K CRI93
 - 2700K CRI93
 - 2400K CRI93
- Wide 29° Super Wide 57° Flood 68°



White



Black



MINI30 SPOTLIGHT

Fixture diameter : 29

Introducing our new, compact, and elegant MINI SPOTLIGHT series. The MINI30 SPOTLIGHT has a diameter of just 29mm. It's not only cute and small but also offers excellent glare control and lighting distribution. The series comes in both "zero-glare" gloss black and "soft-glow" matte black cone finishes, and also includes a honeycomb louver option for a sophisticated look. You are sure to find a suitable combination for your design.

250TYPE 5.6W

● 3000K CRI93 ● 2700K CRI93 ● 2400K CRI93

↘ Narrow 16° ↘ Middle 22° ↘ Wide 29° ↘ Super Wide 54°

Glare Cut
35°



Flange-mount 48V Track-mount



MINI40 SPOTLIGHT

Fixture diameter : 38

Designed with the same concept as the MINI30 SPOTLIGHT, the MINI40 SPOTLIGHT series packs more punch. The 700TYPE high-power range is more than capable of being used as base lighting.

500 / 700TYPE 10.2 / 14.2W

● 3000K CRI93 ● 3000K CRI93 ● 2700K CRI93

↘ Narrow 13° ↘ Middle 22° ↘ Wide 33° ↘ Super Wide 48°

↗ Wallwasher

Glare Cut
30°



Flange-mount 48V Track-mount





MINI30 Spotlights combine decorative wall-mounted design with adjustable beam direction. Their warm light draws the eye upward and highlights the soft curves of the staircase, creating a calm and refined atmosphere.

MINI30
SPOTLIGHT
SURFACE-MOUNTED

250TYPE 9.6W
3000K CRI93 2700K CRI93 2400K CRI93
Narrow 16° Middle 22° Wide 29° Super Wide 54°



MINI40
SPOTLIGHT
SURFACE-MOUNTED

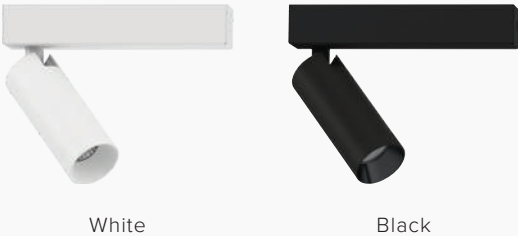
500TYPE 10.4W
3000K CRI83 3000K CRI93 2700K CRI93
Narrow 13° Middle 22° Wide 33° Super Wide 48°



MINI30



MINI40





MINI30 PULLDOWN

250TYPE 5.6W

● 3000K CRI93 ● 2700K CRI93 ● 2400K CRI93



↖ Narrow 16° ↖ Middle 22° ↖ Wide 29° ↖ Super Wide 54°

MINI40 PULLDOWN

500TYPE 10.2W

● 3000K CRI83 ● 3000K CRI93 ● 2700K CRI93



↖ Narrow 13° ↖ Middle 22° ↖ Wide 33° ↖ Super Wide 48°



Circular Pull-down



Square Pull-down Single / Dual



The MINI30 PULLDOWN is another variation of the MINI30 SPOTLIGHT series, featuring the same core aesthetics, beam angle lineup, and optional accessories. Also available in a Single-Head square trim, or Dual-Head square trim configuration, not only is this series aesthetically unique, but it also offers unparalleled flexibility.

The Dual-Head MINI30 PULLDOWN can make an interesting addition to a foyer. If there is an object to illuminate, pull out the fixture and use it as a spotlight. If not, keep it recessed and use it as base lighting. A single fixture can not only provide different functions, but also allows flexibility to combine different beam angles as well.



In this modern industrial living space, ACCORD55 Spotlights subtly blend into the exposed concrete ceiling. Their precisely directed beams highlight artwork and textures, while natural daylight floods in through the large windows. The result is a layered, refined ambiance that balances architectural strength with softness.



ACCORD55 SPOTLIGHT

Engineered for high ceilings and expansive interiors, the ACCORD55 is a powerful spotlight that merges architectural simplicity with technical precision. Offering four beam angles from Narrow 12° to Super Wide 58°, it adapts to both accent and ambient lighting needs. Its clean cylindrical body, available in flange or track mount types, integrates seamlessly into modern spaces with exposed structures. With a built-in driver, it also simplifies installation - even in concrete slab ceilings. Optional accessories include a long snoot and honeycomb louver for enhanced glare control and visual comfort.

900 / 1500TYPE 7.9 / 14.3W

- 4200K CRI96 3500K CRI96 3000K CRI96
- 4000K CRI83 3500K CRI83 3000K CRI83 3000K CRI93 2700K CRI93

Narrow 14° *900TYPE 12° Middle 23° Wide 36° Super Wide 59°



Flange-mount



Track-mount



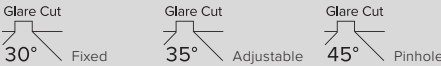
ACCORD65

MR16

Fixture diameter : 73

ACCORD65 is a compact, glare-controlled housing for LED MR16 lamps with GU10 or GU5.3 base. With a minimal aperture size of just 65mm—exceptionally small for MR16 downlights—it allows for a clean ceiling finish without sacrificing light performance. Available in fixed and adjustable types, it's ideal for hotels, residences, and retrofit projects requiring both compatibility and elegance.

LAMP : GU10, GU5.3



With its discreet 65mm aperture and glare-less pinhole design, ACCORD65 delivers refined lighting that quietly enhances the room. The result is a serene and luxurious atmosphere - where comfort is felt, but the light source is never seen.



Bathroom lighting shouldn't be compromised because of water protection requirements. Enjoy a luxurious bath experience with glare-free fixed downlights softly illuminating the bathtub, and adjustable downlights gently lighting the walls. For a more dramatic effect, consider using a narrower beam to create striking light and shadow contrasts.



MINI50

GLARE-LESS IP54

Fixture diameter: 60

With the MINI50 GLARE-LESS IP54, you can safely use them in bathrooms where water may potentially splash on the fixtures. These fixtures are nearly identical to the IP20 variants in both appearance and performance, allowing them to be used side-by-side without sticking out like a sore thumb.

500 / 700TYPE 10.2 / 14.2W

3000K CRI83

3000K CRI93

2700K CRI93

Glare Cut

35°

Fixed:

^

 Middle 23°

^

 Wide 31°

^

 Super Wide 45°

Adjustable:

^

 Narrow 15°

^

 Middle 22°

^

 Wide 26°

^

 Super Wide 36°



Fixed Adjustable Fixed



Fixture diameter: 43

MINI35

IP54 FIXED

A compact, glare-less downlight designed for semi-wet or humid environments such as powder rooms, bathrooms, or covered outdoor areas. With a cut-out size of just 35mm and beam angles up to 68°, it delivers wide, comfortable illumination while preserving a clean ceiling finish. IP54 protection ensures reliability in moisture-prone spaces without compromising on elegance or visual comfort.

Mirror :

250TYPE 5.6W

Wide 29° Super Wide 54°



Pinhole :

250TYPE 5.6W

Wide 29°



Shallow :

150TYPE 3.1W

Flood 68°

3000K CRI93 2700K CRI93 2400K CRI93



Mirror



Pinhole



Shallow



In washrooms and semi-outdoor spaces, MINI35 GLARE-LESS IP54 delivers gentle, wide-spreading light that feels natural and unobtrusive. Its minimal footprint and moisture resistance make it ideal for maintaining visual consistency across both dry and damp areas.



In homes where ceilings are designed to be seen and felt, MINI50 CEILING DOWN adds light without distraction. Its soft, glare-less glow gently defines living areas and passageways, creating a calm, comfortable atmosphere that feels both intentional and effortless. And with its surface-mounted design, it offers flexibility for spaces where recessed lighting is not an option.

MINI50 CEILING DOWN

A surface-mounted downlight designed for applications where recessed installation is not possible. With glare-less optical control and two beam angles - Wide and Super Wide - it provides uniform, comfortable lighting across a range of ceiling conditions. This fixture brings visual clarity and design flexibility to exposed ceilings and concrete slabs because of the built-in driver design. The IP54-rated version enables cohesive lighting design that extends seamlessly from interior to exterior spaces.

500 / 700TYPE 10.2 / 14.2W

● 3000K CRI83 ● 3000K CRI93 ● 2700K CRI93

△ Wide 31° △ Super Wide 45°

Glare Cut
35°



500TYPE



700TYPE



The extension spike, adjustable between 500-900mm, provides flexibility to adapt to changes in the landscape. This allows the fixture to illuminate tall trees while remaining concealed within short bushes.



MINI50
OUTDOOR SPOTLIGHT

Fixture diameter: 55

The MINI50 Outdoor Spotlight is a powerful 10W spotlight series ideal for illuminating trees. This series offers various beam options, including Narrow, Medium, Wide, and Super Wide. We provide a range of hood options to cater to different beam angles, including Cut-Hood, Long Hood, and Short Hood. To accommodate various installation needs, the series is available in Spike, Flange, EZ-Mount, Tree-Band, and height-adjustable Extension-Spike configurations.

600TYPE 10.1W

● 3000K CRI83 ● 2700K CRI93

└ Narrow 14° └ Middle 23° └ Wide 29° └ Super Wide 42°





MINI30

OUTDOOR SPOTLIGHT

Fixture diameter: 3.1

Carrying the same DNA as the Indoor MINI30 SPOTLIGHT series, the brand new MINI30 OUTDOOR SPOTLIGHT offers the same beam angle lineup in an IP65-rated body. Powered by a 24V driver, the fixture is safe to touch and allows for the connection of around 5 to 15 fixtures in parallel. Like other models in the series, it includes glare-reducing options such as a honeycomb louver and hood. The initial release will feature a flange base and spike mount, with additional variations like the tree strap and multi-head low pole to be added in the future.

250TYPE 4.4W

3000K CRI93 2700K CRI93

Narrow 17° Middle 23° Wide 30° Super Wide 47°



A terrace should be glare-free and comfortable, allowing your family and loved ones to enjoy and relax. Carefully selected outdoor furniture and plants deserve elegant and compact lighting with low glare. Our 5W MINI30 OUTDOOR SPOTLIGHT is the perfect low-wattage companion for your outdoor lighting needs.



MINI30 spotlights gently illuminate the tree canopy and architectural columns, creating a serene rhythm of light across the courtyard. Balancing functional visibility with natural beauty, the lighting blends into the landscape without overwhelming it.



Dark leather



Silver

MINI30 OUTDOOR BRACKET

Fixture diameter : 31

250TYPE 4.4W

● 3000K CRI93

↘ Narrow 17° ↘ Middle 23° ↘ Wide 30° ↘ Super Wide 47°
*Special order *Special order

Designed for exterior walls and columns, this high-performing outdoor spotlight combines a compact form with excellent beam control. Its adjustable bracket allows precise aiming, making it ideal for softly highlighting architectural textures or illuminating pathways with clarity and comfort. With its minimal body available in dark leather or silver finishes, it blends seamlessly into diverse exterior environments without drawing attention.



Fixture diameter: 31

MINI30

OUTDOOR SLENDER

Designed with a refined, minimal silhouette, the MINI30 Outdoor Slender delivers precise accent lighting without disrupting the natural landscape. Available in various heights and mounting styles, it offers flexible installation for pathways, gardens, and architectural perimeters. Its slender form disappears into greenery by day and brings clarity and elegance by night.

250TYPE 4.4W

3000K CRI93 2700K CRI93

Narrow 17° Middle 23° Wide 30° Super Wide 47°



Discreet yet effective, MINI30 Slender guides guests along the path with softly focused light. Its elegant, low-profile design blends into the landscape, enhancing the atmosphere without visual intrusion.



As the sun sets, MINI30 Outdoor Multi-Stack lights come alive - gently highlighting the textures of foliage and bark. The multi-level arrangement allows for dynamic lighting effects that bring depth and visual interest to the garden, while maintaining a sense of calm and elegance.



MINI30
OUTDOOR MULTI-STACK

Fixture diameter: 31

The MINI30 Outdoor Multi-Stack combines compact design with flexible modularity. With up to three spotlight heads mounted on a single pole, it enables simultaneous vertical and horizontal illumination - ideal for highlighting ornamental trees in courtyards while gently accenting the ground plane, such as lawns or pathways. Its precision optics and low-glare options ensure comfortable, atmospheric illumination for gardens, courtyards, and architectural landscapes.

250TYPE 4.4W

● 3000K CRI93 ● 2700K CRI93

↙ Narrow 17° ↘ Middle 23° ↗ Wide 30° ↖ Super Wide 47°



Silver
*Special order



Straight
1 unit



Straight
2 units



Straight
3 units



T-unit

How to create different ambiance



Dramatic

Luxurious atmosphere like a 5-star hotel lobby with narrow beams highlighting sections of sofas and tables.

REFERENCE
CH: 3.2M
Pitch: 1.8M × 1.8M
Lux(FL+0.75M): Ave. 210lx
Max. 500lx / Min. 50lx

MINI50 GLARE-LESS
Adjustable
700TYPE 14.2W
3000K CRI83
Middle 22°



Flat

Evenly lit with a wide lighting distribution. Provides good visibility and is ideal for gathering, while maintaining a modern and glare-free aesthetic.

REFERENCE
CH: 3.2M
Pitch: 1.8M × 1.8M
Lux(FL+0.75M):
Ave. 230lx / Max. 250lx / Min. 150lx

MINI50 GLARE-LESS
Fixed

700TYPE 14.2W
3000K CRI83
Super Wide 45°



Soft

Similar to the flat style, but with a white cone. Creates an even softer ambiance, without drawing attention to the ceiling.

REFERENCE
CH: 3.2M
Pitch: 1.8M × 1.8M
Lux(FL+0.75M):
Ave. 230lx / Max. 250lx / Min. 150lx

MINI50 GLARE-LESS
Fixed

700TYPE 14.2W
3000K CRI83
Super Wide 45°



How to illuminate walls and artworks



WALLWASHER DOWNLIGHT

1:1 placement is key for the ideal effect. Illuminate both the artworks and the wall perfectly.

REFERENCE
CH: 3.2M
Offset: 0.7M / Pitch: 0.7M
Lux(Artworks): 120lx
Artworks: 1.2M×1.8M

MINI50 GLARE-LESS
Wallwasher
700TYPE 14.2W
3000K CRI83
Wallwasher



ADJUSTABLE DOWNLIGHT

Ensure the top corners are also illuminated. Slight floor illumination creates a nice accent.

REFERENCE
CH: 3.2M
Offset: 0.6M
Pitch: 0.6M
Lux(Artworks): 280lx
Artworks: 1.2M×1.8M

MINI50 GLARE-LESS
Adjustable
500TYPE 10.2W
3000K CRI83
Wide 26°



SPOTLIGHT

The distance from the wall is key. The most effective way to make artworks stand out.

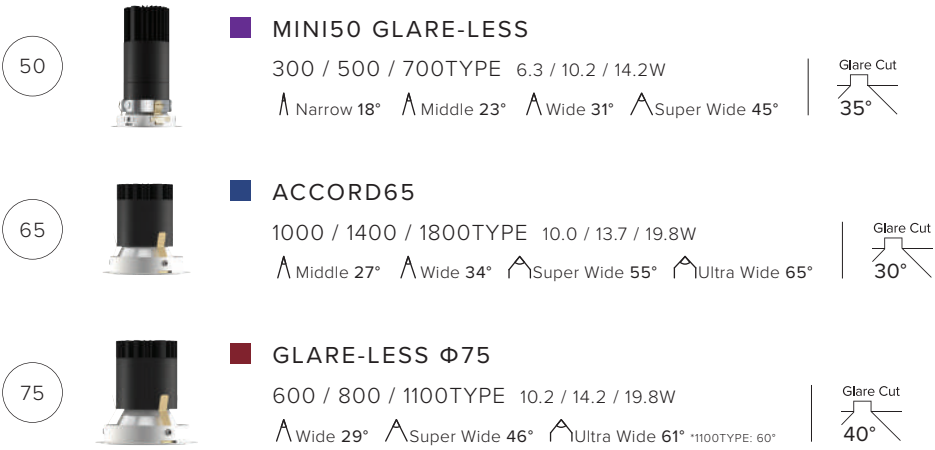
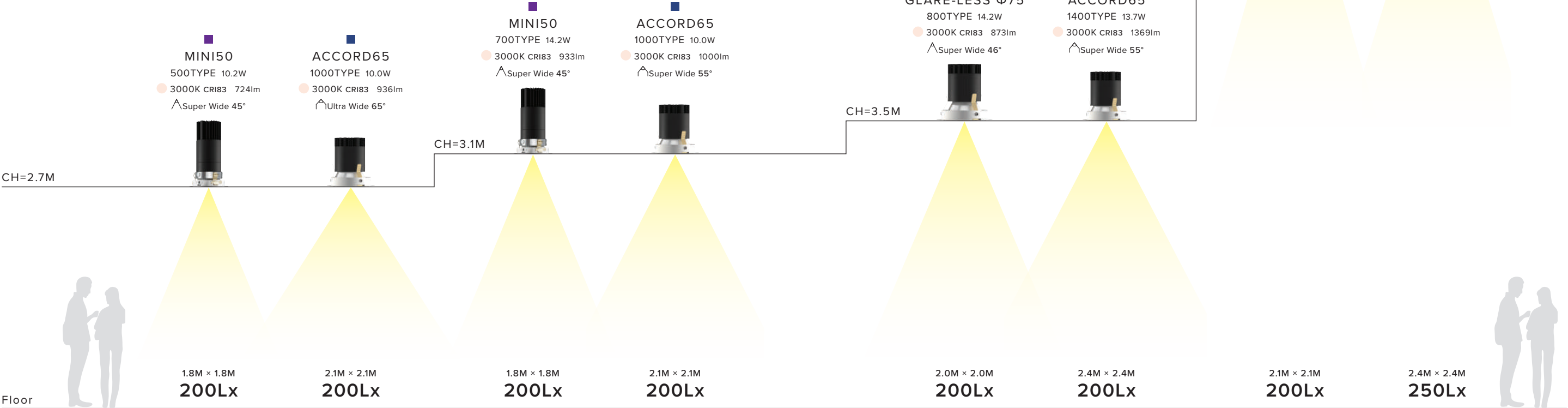
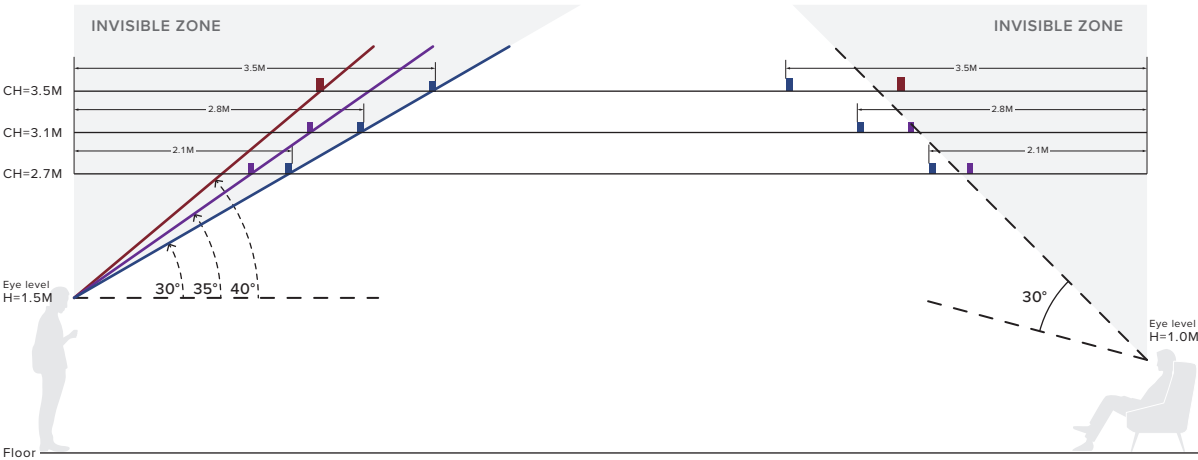
REFERENCE
CH: 3.2M
Offset: 1.2M
Pitch: 0.6M
Lux(Artworks): 300lx
Artworks: 1.2M×1.8M

MINI40 SPOTLIGHT
48V Track-mount
500TYPE 9.7W
3000K CRI83
Wide 33°



Guidelines for glare-free base lighting design

The upper visual field for humans extends to about 60°, while the optimal range is considered to be around 20-30°. To prevent the light source from being visible to human eyes, the lighting fixture should have a cut-off angle of 30° or greater. When seated, the average eye level is approximately 1000mm from the floor. In lower and deeper seating, such as on a sofa, individuals often recline slightly, directing their gaze more towards the ceiling. With a 35° cut-off angle, the light source remains concealed even in these positions. Lastly, our GLARE-LESS mirrored cone is specifically designed to minimize reflections, further reducing the fixture's presence.





Circadian lighting in living room

Circadian lighting aims to create environments where artificial lighting aligns with our natural rhythms, enhancing sleep quality, mood, and overall health.



PRODUCT

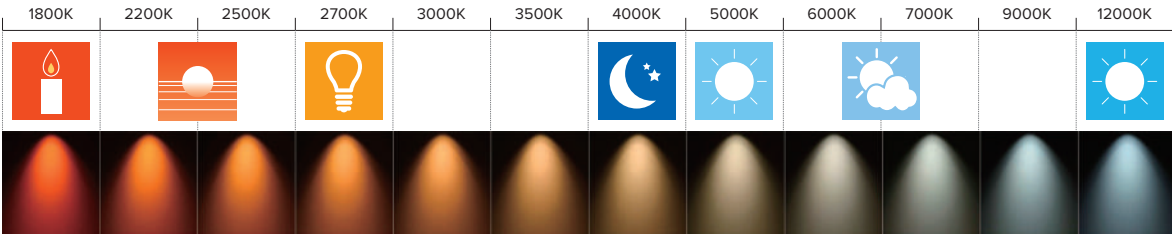
- A** **SXD1092W_SX109N**
GLARE-LESS Adjustable Downlight
Wide 31°
- B** **SXD1091W_SX109N**
GLARE-LESS Adjustable Downlight
Middle 25°
- C** **ERK9708SA_SAD404XA**
Linear Lighting
Flood 136°×105°

CONTROL SYSTEM
SmartLEDZ Base
FX-492W
Gateway Panel



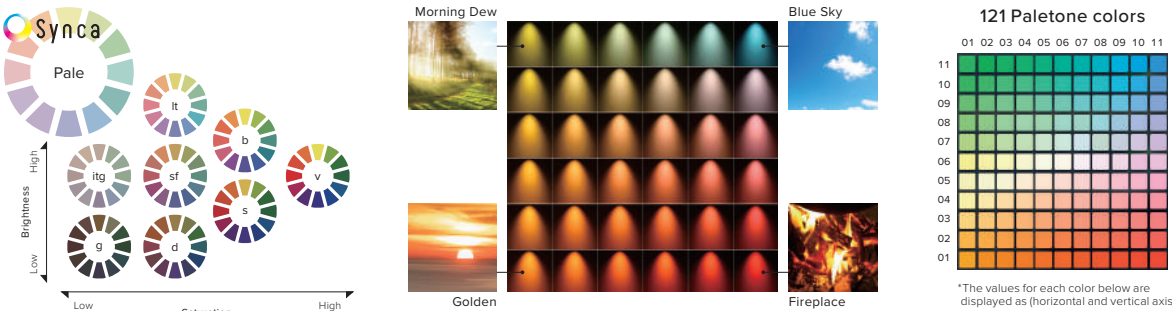
Bring natural light indoors

Synca aims to closely recreate natural light. From candlelight-like 1800K to blue sky 12000K, Synca offers unparalleled color temperature range to bring natural light indoors.



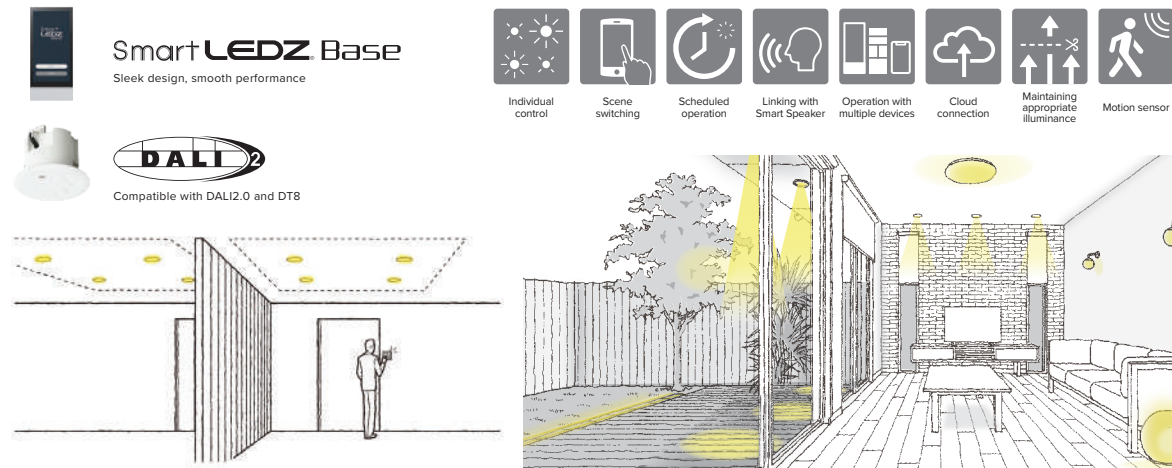
Produce 121 natural colors

Synca offers 121 colors, inspired by natural phenomenon and nature. The signature Paletone colors naturally blends into any environment.



Versatile control compatibility

Synca is compatible with both SmartLEDZ Base and DALI (DT8), allowing seamless integration into various lighting control systems.



Morning

- A** OFF
- B** OFF
- C** CCT: 4200K | Dimming: 100%



Afternoon

- A** CCT: 3000K | Dimming: 100%
- B** CCT: 3000K | Dimming: 100%
- C** CCT: 3000K | Dimming: 70%



Evening

- A** CCT: 2700K | Dimming: 40%
- B** CCT: 2700K | Dimming: 80%
- C** CCT: 2100K | Dimming: 30%



INDIA

ENDO Lighting Accessories India Private Ltd.
marketing@endoindia.in / +91 20 4858 3400

PHILIPPINES

ENDO Lighting (Thailand) Public Company Ltd.
Philippines Branch
endophil.acctg@gmail.com / +63 917 310 0031

THAILAND

ENDO Lighting (Thailand) Public Company Ltd.
elb@d1.endo-lighting.co.jp / +66 2 108 1565 to 66

JAPAN | Head Quater

ENDO Lighting Corporation
International Division
overseas@m1.endo-lighting.co.jp / +81 6 6267 7055

SINGAPORE

ENDO Lighting SE Asia Pte. Ltd.
sales@endo-lighting.com.sg / +65 6333 9051

VIETNAM

ENDO Lighting Vietnam Co., Ltd.
HCM Office
+84 28 3822 1183~6
Hanoi Rep office
info@endo-lighting.com.vn / +84 24 6651 4928



OFFICIAL WEBSITE



CONTACT FORM